

FLUTE 1

MIDLAND

BILLY CHILDS

ARR. IAN CHALK 2020 FOR YMF JAZZ ORCH

♩ = 135

3

2x ONLY

mf

9

1.

16

f

mf

2.

22

f

29

mf

35

f

42

47

3

6

FLUTE 2

MIDLAND

BILLY CHILDS

ARR. IAN CHALK 2020 FOR YMF JAZZ ORCH

♩ = 135

3

2x ONLY

mf

9

1.

16

2.

f

mf

22

f

29

mf

35

f

41

46

3

3

49

6

ALTO 1

MIDLAND

BILLY CHILDS

ARR. IAN CHALK 2020 FOR YMF JAZZ ORCH

$\text{♩} = 135$

3

2x ONLY

mf

9

16

f *mf*

22

f

29

mf

35

f

42

47

6

ALTO 2

MIDLAND

BILLY CHILDS

ARR. IAN CHALK 2020 FOR YMF JAZZ ORCH

$\text{♩} = 135$

3

2x ONLY

mf

9

1.

f

17

2.

mf

23

f

29

mf

36

f

43

49

6

MIDLAND

TENOR 1

BILLY CHILDS

ARR. IAN CHALK 2020 FOR YMF JAZZ ORCH

♩ = 135

3

2x ONLY

mf

9

1.

16

f

mf

2.

22

f

29

mf

3

3

35

f

42

3

47

6

MIDLAND

TENOR 2

BILLY CHILDS

ARR. IAN CHALK 2020 FOR YMF JAZZ ORCH

♩ = 135

3

2x ONLY

mf

9

1.

16

f

mf

2.

22

f

29

mf

3

3

35

f

42

3

47

6

3

BARITONE SAXOPHONE

MIDLAND

BILLY CHILDS
ARR. IAN CHALK 2020 FOR YMF JAZZ ORCH

♩ = 135

3

2X ONLY

mf

9

1.

f

17

2.

mf

f

25

mf

3

33

3

40

f

46

3

3

6

TRUMPET 1

MIDLAND

BILLY CHILDS

ARR. IAN CHALK 2020 FOR YMF JAZZ ORCH

♩ = 135

4

8

1. 3

18

2

27

mf

3

34

40

f

44

3

49

6

MIDLAND

TRUMPET 3

BILLY CHILDS

ARR. IAN CHALK 2020 FOR YMF JAZZ ORCH

♩ = 135

4 8 1. 3

mf *f*

18 2.

2

mf *f*

27 3

mf

34

mf

40

mf

44 3

mf

49 6

mf

TROMBONE 1

MIDLAND

BILLY CHILDS

ARR. IAN CHALK 2020 FOR YMF JAZZ ORCH

♩ = 135

3 8 1. 2

17

f 3

27

mf 3 3 3

33

40

f

44

3 3

49

6

MIDLAND

TROMBONE 2

BILLY CHILDS

ARR. IAN CHALK 2020 FOR YMF JAZZ ORCH

♩ = 135

3

8

1. 2

17

f

2.

3

27

mf

3

3

3

33

40

f

44

3

3

49

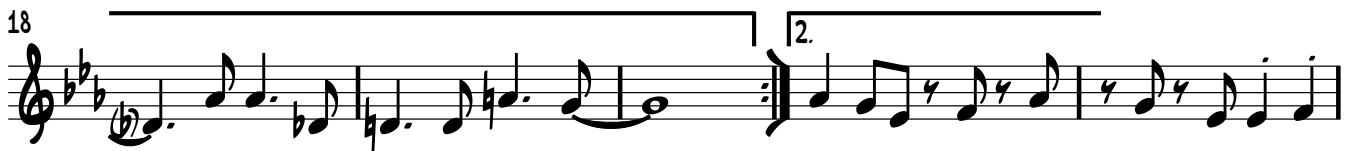
6

MIDLAND

BILLY CHILDS

ARR. IAN CHALK 2020 FOR YMF JAZZ ORCH

♩ = 135



49



53



BASS GUITAR

MIDLAND

BILLY CHILDS

ARR. IAN CHALK 2020 FOR YMF JAZZ ORCH

♩ = 135

Measures 1-4: Bass line in 4/4 time, key of B-flat major. The melody consists of eighth and quarter notes.

5

Measures 5-8: Continuation of the bass line from measures 1-4.

9

Measures 9-13: Continuation of the bass line. Measure 13 includes a first ending bracket.

14

Measures 14-18: Continuation of the bass line. Measure 18 ends with a double bar line.

19

Measures 19-23: Continuation of the bass line. Measure 19 includes a second ending bracket.

24

Measures 24-28: Continuation of the bass line. Measure 28 ends with a double bar line.

29

Measures 29-34: Continuation of the bass line. Measure 34 ends with a double bar line.

35

Measures 35-39: Continuation of the bass line. Measure 39 ends with a double bar line.

